

NOMACHINE		Appendix A - General HowTo's Enable file sharing	
Prepared by: Bartolo Qualano		N°: D-309/9-NXH-DOC	
Approved by: Gian Filippo Pinzari	Signature:	Date: 07/06/2007	Amended: B

General HowTo's

Enable file sharing

NOMACHINE		Appendix A - General HowTo's Enable file sharing	
Prepared by: Bartolo Qualano		N°: D-309/9-NXH-DOC	
Approved by: Gian Filippo Pinzari	Signature:	Date: 07/06/2007	Amended: B

Index

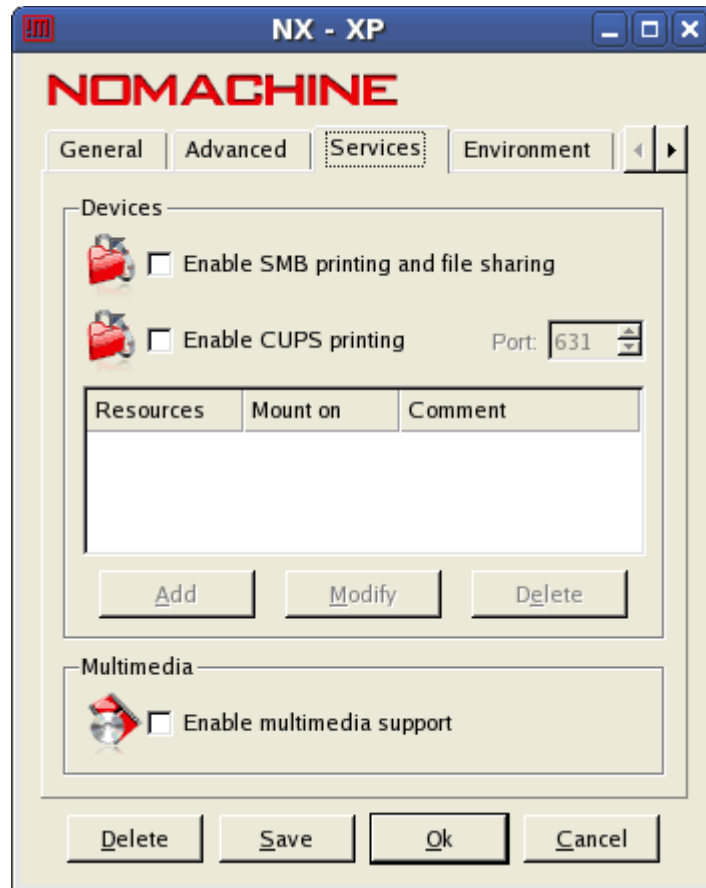
1. Appendix A - Enable file sharing.....	3
1.1 Configure Client.....	4
1.2 Configure Samba Server.....	4
1.3 Add resources.....	4
1.4 Session Running.....	5

NOMACHINE		Appendix A - General HowTo's Enable file sharing	
Prepared by: Bartolo Qualano		N°: D-309/9-NXH-DOC	
Approved by: Gian Filippo Pinzari	Signature:	Date: 07/06/2007	Amended: B

1. Appendix A – Enable file sharing

1.1 Configure Client

Run NX Client, open the "Configure" panel and select "Services". Check "Enable SMB printing and file sharing".



If the warning dialog appears:

NOMACHINE		Appendix A - General HowTo's Enable file sharing	
Prepared by: Bartolo Qualano		N°: D-309/9-NXH-DOC	
Approved by: Gian Filippo Pinzari	Signature:	Date: 07/06/2007	Amended: B



it will mean that Samba Server Daemon is not running on your computer. To start samba open a terminal window (and login as superuser).

```
# su -
```

Password: (put your password here)

```
# /etc/init.d/smb start
```

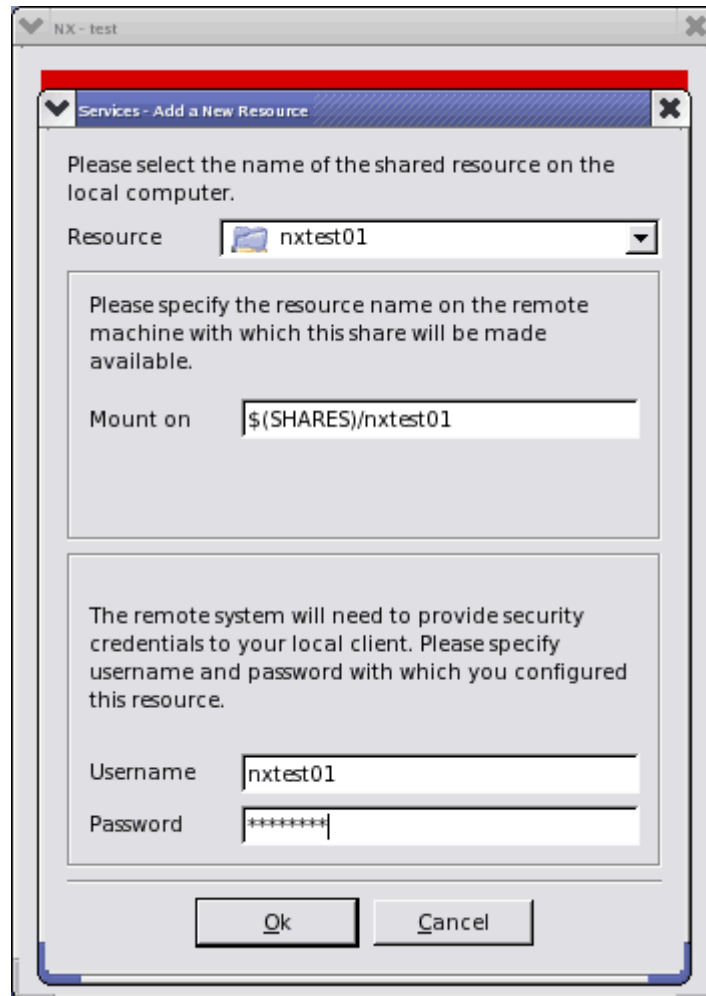
1.2 Configure Samba Server

To learn more about the configuration of samba server you can look at: <http://www.samba.org>

1.3 Add resources

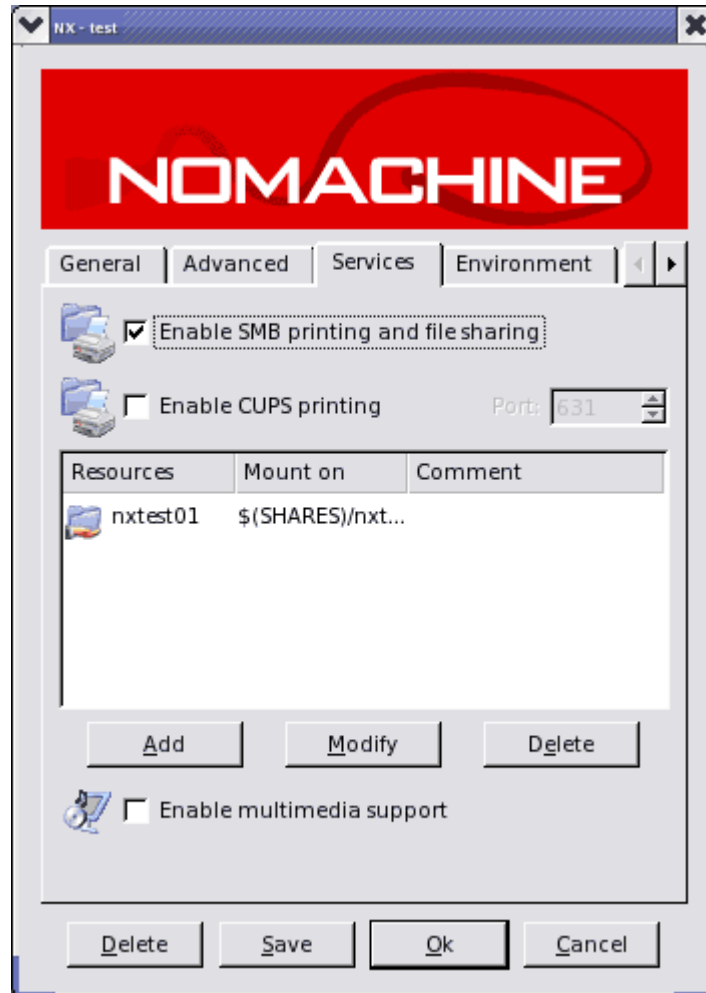
Now you can add the resources in the panel "Services" of the "Configuration" window. Insert the name of the local folder that is to be shared, and then the name of the home directory on the remote server where it will be mounted. Insert your user name and password and click on "Ok".

NOMACHINE		Appendix A - General HowTo's Enable file sharing	
Prepared by: Bartolo Qualano		N°: D-309/9-NXH-DOC	
Approved by: Gian Filippo Pinzari	Signature:	Date: 07/06/2007	Amended: B



You should see the newly added resources and where they are mounted in the dialog list. From here you can add more, delete or modify existing ones. Click "Save" and "Ok" to go back to the main configuration client dialog

NOMACHINE		Appendix A - General HowTo's Enable file sharing	
Prepared by: Bartolo Qualano		N°: D-309/9-NXH-DOC	
Approved by: Gian Filippo Pinzari	Signature:	Date: 07/06/2007	Amended: B

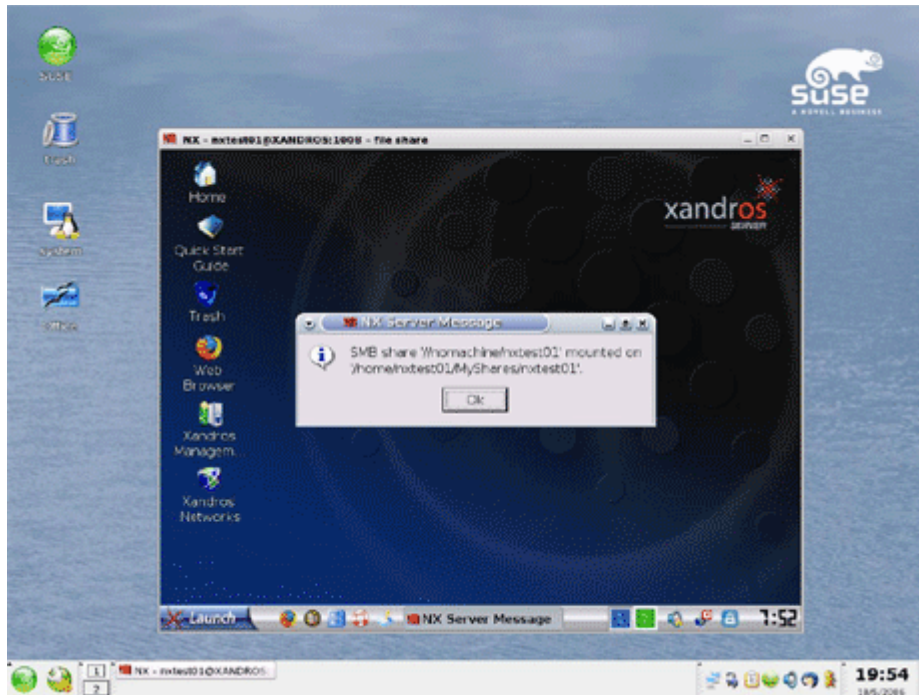


Save new configuration and run the session.

1.4 Session running

After your session is started you should see the dialog boxes informing you about new directories shared on your desktop.

NOMACHINE		Appendix A - General HowTo's Enable file sharing	
Prepared by: Bartolo Qualano		N°: D-309/9-NXH-DOC	
Approved by: Gian Filippo Pinzari	Signature:	Date: 07/06/2007	Amended: B



Close the message box and you will be able to start using the shared resources.

